

# The Judith A. Lese Breast Cancer Foundation, Inc.

100% of contributions are disbursed



*“in the pursuit of education and cure for breast cancer”*

## EXECUTIVE BOARD

Judith A. Lese, M.Ed.  
Founder and CEO

Laurence S. Lese, J.D.  
Vice-President

Jay E. Hagler, M.A.  
Treasurer and Secretary

JALBCF #12-23

EVERY MONTH IS BREAST CANCER AWARENESS MONTH

August 20, 2023

Dear Foundation Friends,

## MEDICAL ADVISORY COUNCIL

Nancy Davidson, M.D.  
Senior Vice President,  
Director and Professor  
Clinical Research Division  
Fred Hutchinson Cancer  
Research Center

Colette M. Magnant, M.D.  
F.A.C.S.  
Breast Surgeon

Pouneh Razavi, M.D.  
Director of Breast Imaging,  
Sibley Memorial Hospital and  
Suburban Hospital

Frederick P. Smith, M.D.  
Medical Oncologist  
Chevy Chase, Maryland

Irene Gage, M.D.  
Emeritus

## LEGAL COUNSELORS

Reid Avett, Esq.  
Womble Bond  
Dickinson (US) LLP  
Washington, DC

Patrick McPherson, Esq.  
Duane Morris LLP  
Washington, DC

501(c)(3) Organization  
Fed. ID 20-0061083

Hello to each of you! My hopes and wishes have been that for each of you, for your family and your friends, in your personal lives, your professional lives and all other involvements that constitute your days have been filled with positive AND successful outcomes. I am very much applauding that The Judith A. Lese Breast Cancer Foundation is entering its 21<sup>st</sup> year! We were established in 2003! Let me share from our archives, the 1<sup>st</sup> Fundraiser Dinner guest speaker, Laurence S. Lese and his 8-paragraph speech:

*1. Welcome to all. An especial welcome and warm thanks to Judy's doctors. Thanks to all of you for coming to this very special evening and for honoring us with your presence. I say that from my heart.*

*2. In our current world of FLOO POWDER, HOGWARTS, and RON, HERMIONE and HARRY, the MATRIX, X-MEN and even NEMO, we have glimpses of a world of fiction, a world created by others' imaginations, a world, bereft of reality.*

*3. Over the past year, we have seen a very real and different world, through the eyes of Judy and our personal relationships with her. It's been a very difficult year, but a year wrapped in strength, hope, imagination, and achievement. We have seen a reality that has touched our lives.*

*4. Through the harshness of this past year, Judy has shown not only how tough and resilient she is, but also how focused, creative, imaginative, and inspirational she is. She was going to win her war and do whatever it would take to win that war. Yet from the very beginning and through the horrid days of surgery and treatment, she dedicated herself to her inspiration of educating others so they might be better equipped to understand and confront the disease and trying to assist in the fight to find a cure for breast cancer.*

*5. Her confrontation with her illness and her goal of establishing a foundation to make life better for others through education and through advancing science for a cure have been her inspiration and guiding light throughout this past year.*

*6. Finally, an apropos dialogue from Henry IV, Part 1 between a Welsh noble Glenwyr and an English knight Hotspur before the pivotal battle of Shrewsbury: Glenwyr: "I can call spirits from the vasty deep." Hotspur: "Why, so can I, or so can any man; But will they come when you do call for them?"*

*7. Well, when all is said and done, not only has Judy called, but she has delivered. From Judy's imagination and inspiration, from her focus and the goals she has set for herself, we have now the reality of The Judith A. Lese Foundation, "in the pursuit of education and cure for breast cancer."*

8. I am thankful to be part of this enterprise and am thrilled that all of you too are a part of this enterprise. Thank you, Judy, and THANK EACH of YOU so very much.

\*\*\*\*\*

To all, we are entering our third decade and I/We are totally committed to Foundation's mission, to our goal to grow our Foundation, to my aspirations to increase fundraising monies that 100% are disbursed to specific research/ researchers, related projects, support equipment acquisitions and related project purchases. WE CAN DO THIS ONLY WITH YOU AND YOUR EFFORTS AND SUPPORT. Please share ideas and contacts to partner with in making this a growing reality! Please share our website with updated postings, invitations, and education documents. I want to also thank our TEAM and our speakers, always giving from their hearts! Foundation Team below:

**- Laurence S. Lese, our Vice-President:** As we have done for several years, we applied for the 2023 Combined Federal Campaign (CFC) for the National Capital Area. We were approved, which allows federal employees to make their charitable donations to our Foundation during the 9/1/2023 to 1/15/2024 solicitation period. CFC is an important source of our funding. **Our CFC Code is 53302.** We continue to utilize the pro bono programs of our two law firms which have provided legal advice and services for the Foundation. Duane Morris LLP provides advice regarding intellectual property issues, and printing and distribution services for our communications materials. Womble Bond Dickinson (US) LLP provides advice regarding federal and state tax matters and files our tax materials as necessary.

**- Jay Hagler, our Secretary & Treasurer:** If you have not done so yet, **we request your email address** so that we can send you the latest Foundation information, thank you. Note - we have only one mailing per year. Finally, in addition to checks, you can also make donations to Foundation via PayPal. The link to make a PayPal donation is contained within our website ([www.judithalese.org/Donate.htm](http://www.judithalese.org/Donate.htm)).

**- Reid Avett, our Tax Attorney:** I ensure the Foundation's adherence to federal and state regulations concerning corporate governance and tax obligations – and help to plan for the future. By providing this guidance, the Foundation can focus 100% of its energy on helping to further the Foundation's mission.

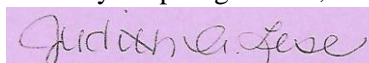
**- Stephanie Lemke, our Webmaster:** I am responsible for maintaining and managing the Foundation's website to meet user needs. I am responsible for the site's design & development which includes performing routine site & content maintenance and updates to ensure it aligns with Foundation's goals and objectives.

It is with great pride that our 2022 fund disbursements (100% of raised monies) were made to: 1 - The Sullivan Center for Breast Health at Sibley Memorial Hospital-Johns Hopkins Medicine towards mammography equipment; 2 - The Fred Hutchinson Cancer Center in Seattle, Washington, for continued support of Dr. Jennifer Specht's research on Immunotherapy; 3 - The Sidney Kimmel Cancer Center for research by Dr. Vered Stearns-Metastatic Breast Cancer and Dr. Cesar Santa-Maria's research on Immunotherapy; 4 - the UCLA-Jonsson Comprehensive Center and Dr. Dennis Slamon's breast cancer research; and 5 - The Jackson Laboratory, Bar Harbor, Maine and Dr. Edison Liu's Triple Negative Breast Cancer research.

It is with great pleasure I share that, at our October 4<sup>th</sup> Fundraiser Dinner at Maggiano's, Chevy Chase, our guest speaker is Dr. Maureen O'Donnell, Breast Surgeon, Johns Hopkins Sibley Memorial Hospital, Washington, D.C. Dr. O'Donnell will present a most special educational opportunity for each of us.

Yes, we are a GRASSROOTS 501(c)(3) non-profit -- but our effects from supporting research and breast care are far reaching and I THANK YOU! Looking forward to seeing all October 4.

With my deepest gratitude,



Judith A. Lese, Founder and CEO



# About Fred Hutchinson Cancer Center



**Fred Hutchinson Cancer Center unites individualized care and advanced research to provide the latest cancer treatment options while accelerating discoveries that prevent, treat and defeat cancer and infectious diseases worldwide.**

Based in Seattle, Fred Hutch is an independent, nonprofit organization and the only National Cancer Institute–designated cancer center in Washington. We have earned a global reputation for our track record of discoveries in cancer, infectious disease and basic research, including important advances in bone marrow transplantation, immunotherapy, HIV/AIDS prevention, and COVID-19 vaccines. Fred Hutch operates eight clinical care sites that provide medical oncology, infusion, radiation, proton therapy and related services and has network affiliations with hospitals in four states. Fred Hutch also serves as UW Medicine’s cancer program.

“  
*We are delivering advances that reshape research, reset the standards in cancer care and prevention, and lead to healthier lives for people everywhere.*  
”

**Thomas J. Lynch Jr., MD**  
President and Director  
Raisbeck Endowed Chair

## Leading-edge science, compassionate care

By connecting the best science being done anywhere with a world-class health system, Fred Hutch is accelerating breakthroughs to prevent and eliminate cancer and infectious disease.

**Cancer research.** Our work to prevent, diagnose, treat, and cure cancer could not be more urgent. We are on the path to revolutionizing cancer treatments and care.

**Precision oncology.** We’re uncovering a stunning range of variables that affect how tumors behave and finding new opportunities to precisely target cancers with personalized treatments.

**Immunotherapy.** Our first generation of engineered T cells is curing some patients with blood cancers. Now we’re building on this success to design T cells that are effective, enduring cures for all types of cancers.

**Patient support.** We’re charting new paths to enhance the patient experience, reduce the symptoms and stress of cancer, and support our patients and their families along every step of the journey.

**Access for all.** In our labs, clinics, and community, we’re addressing widespread and complex inequities in disease prevention, detection, treatment, and outcomes — not just for some people, but for everyone.

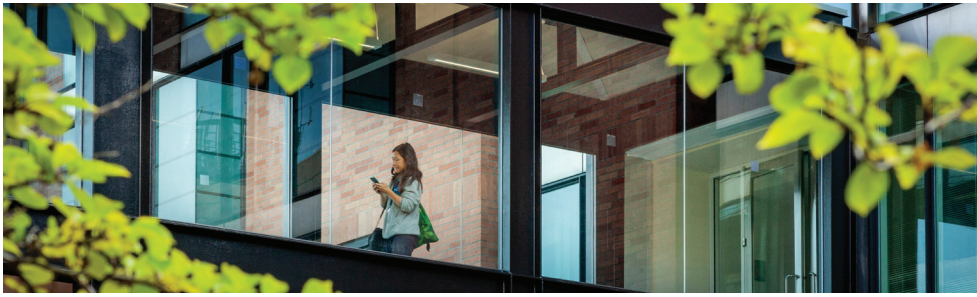
**Data in action.** We partner across sectors to create new methods that reveal insights in massive data sets and transform data into discoveries that improve early detection, personalize treatment, and save lives.

**Infectious disease and vaccines.** We are working in the laboratory, the clinic, and the cloud to find better ways to protect patients and communities from life-threatening viruses, including HIV and COVID-19.



### Who was Fred Hutchinson?

Fred “Hutch” Hutchinson, a beloved Major League Baseball player and manager, died of cancer at age 45. His older brother, Dr. Bill Hutchinson, established a cancer center in his name as a living memorial.



## From lab to clinic

Fred Hutch has a comprehensive approach, with research ranging from exploring the fundamental building blocks of life to combining clinical studies with patient care. We are also highly collaborative. Key collaborations include:

- **UW Medicine.** Our relationship allows for enhanced care coordination between a top-ranked cancer center and a leading integrated health system and accelerates the latest scientific breakthroughs in cancer and other life-threatening diseases.
- **The Fred Hutch/University of Washington/Seattle Children's Cancer Consortium.** Three powerhouse institutions serve as the Comprehensive Cancer Center for Washington, Wyoming, Alaska, Montana, and Idaho, with experts collaborating to develop and deliver the best care.
- **Uganda Cancer Institute/Hutchinson Center Cancer Alliance.** In East Africa, we are advancing research and training leaders in cancer care.



Fred Hutchinson Cancer Center is an independent organization that serves as UW Medicine's cancer program.

UW Medicine

## Donor dollars in action

Generous supporters like you are critical to advancing prevention, detection, treatment, and cures.

We're proud that we lead independent research institutes in securing NIH funding, which is a testament to our scientific excellence. But your gift does what no other funding can do: It nurtures innovative ideas and accelerates research so new treatments move from the lab to patients faster. Your support:

- Funds high-risk studies with the potential for high reward.
- Jump-starts projects up to six times faster than research funded by federal grants alone.
- Attracts millions more in government and foundation dollars.

Our work has already led to cures for some cancers. Now we're looking beyond today's limits to deliver lifesaving research, life-affirming care, and healthier lives for every person in every community.

## By the numbers

# 3

Nobel Prizes earned for breakthrough research

# 8

clinical care sites

# 52

companies launched from our research

# 245

research faculty

# 370

physicians

# 430+

active clinical trials giving patients access to leading-edge treatments

# 5,700+

highly skilled scientists, providers, and staff working to prevent, diagnose, treat, and cure cancer and other diseases

# 35,000

donors supporting our work

# 53,000

patients treated annually



# Using Adoptive Cellular Immunotherapy to Target Breast Cancer

Supported by The Judith A. Lese  
Breast Cancer Foundation

## The Promise of T Cells

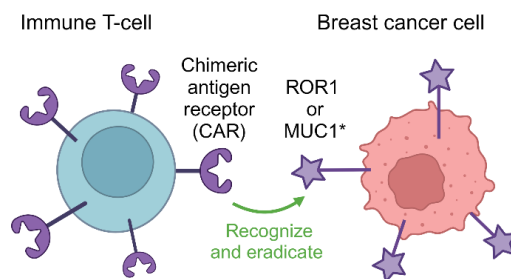
Adoptive cellular immunotherapy involves reprogramming a patient's own T cells to recognize and target their cancer. A patient's T cells are collected and genetically modified with a chimeric antigen receptor (CAR), which allows the T cells to recognize a specific protein on the surface of the cancer cells. CAR T-cell therapy has transformed outcomes for certain patients with lymphoma, leukemia, and multiple myeloma, and the goal is to extend that success to solid tumor cancers, including breast cancer.

## Our Work

At the Fred Hutchinson Cancer Center, our research and clinical teams are studying two tumor proteins found on the outside of breast cancer cells, ROR1 and MUC1\*. ROR1 is expressed selectively on triple negative breast cancers and some lung cancers, but not on normal, healthy tissues. A cleaved, or shortened, form of the Mucin protein, MUC1\*, is present on all breast cancer subtypes (e.g., ER+, HER2+, and triple negative) and highly expressed in high-grade breast cancers. For these reasons, ROR1 and MUC1\* are promising targets for CAR T-cell therapy.

One of the challenges of CAR T-cell therapy for breast cancer is understanding barriers in the tumor environment that may impede the CAR T cells from directly interacting with the breast cancer, which is necessary for tumor eradication.

The gift from The Judith A. Lese Breast Cancer Foundation has enabled Fred Hutch and UW Medicine colleagues Jennifer Specht, MD, a breast cancer specialist, and Cecilia Yeung, MD, an expert pathologist, to optimize tests to track interactions between CAR T cells and breast tumors in patients treated as part of their first-in-human Phase 1 ROR1 and MUC1\* CAR T-cell trials.



Chimeric antigen receptors on the outside of a T cell (left) target the ROR1 or MUC1\* proteins (purple stars) found on breast cancer cells (right). [Credit: Biorender.com]

Fred Hutchinson Cancer Center is an independent, nonprofit organization that also serves as the cancer program for UW Medicine. Our relationship allows for enhanced care coordination between a top-ranked cancer center and a leading integrated health system and accelerates the latest scientific breakthroughs in cancer and other life-threatening diseases.

Fred Hutch is proud to raise funds that fuel the adult oncology program on behalf of both Fred Hutch and UW Medicine.

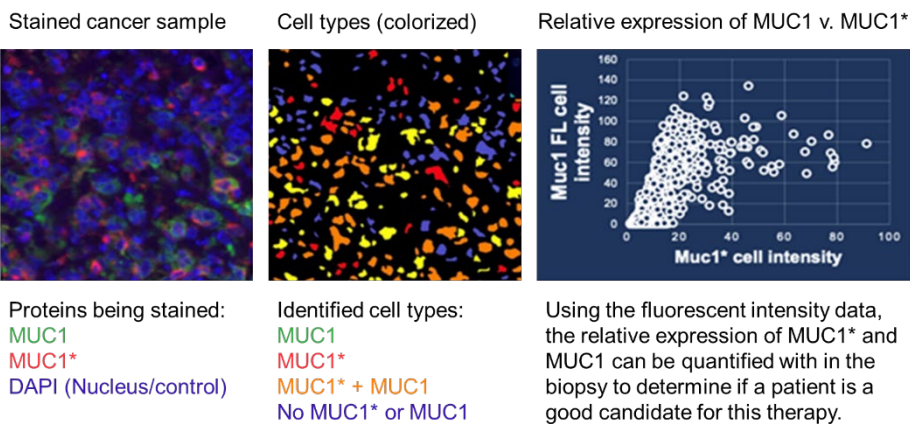
UW Medicine

# Research Progress

Specifically, the foundation’s funds support the development and optimization of an assay that detects CAR T cells. The WPRE qPCR assay involves a piece of DNA called WPRE which is used in the process of programming the CAR T cells. Detecting WPRE by a method called polymerase chain reaction (PCR) allows Drs. Specht and Yeung to measure the CAR T cells in a metastatic tumor biopsy. They successfully optimized this assay to test for presence of CAR T cells in the tumors of breast cancer patients treated with ROR1 and MUC1\* CAR T cells. This assay will provide important insight into how CAR T-cell therapies interact with patients’ breast tumors, and it will be a valuable tool for use with other solid tumors such as lung and pancreatic cancer.

Support from The Judith A. Lese Breast Cancer Foundation also made it possible to develop a new method to quantify the amount of MUC1\* and ROR1 proteins on the outside of breast cancers. Results from the assay of expression of MUC1\* (cleaved) and MUC1 (full-length) on breast cancer samples **is shown in the figure**

**at left.** Due to MUC1’s large size, it may interfere with ability of CAR-T to find MUC1\*, affecting a patients’ response to therapy. This assay provides enhanced information on how much full-length versus cleaved MUC1 is present, allowing the team to better select breast cancer patients for therapy with MUC1\* CAR T cells.



## Meet the Researchers



**Jennifer Specht, MD**, is a board-certified medical oncologist who specializes in all stages of breast cancer with expertise in triple-negative breast cancer. At Fred Hutch, she sees patients in the Bezos Family Immunotherapy Clinic and leads the Phase 1 Breast Cancer Program. Her research interests include breast cancer genetics, immunotherapy, and the use of molecular imaging to better understand the biology of breast cancer. She holds the Jill D. Bennett Endowed Professorship in Breast Cancer at UW Medicine.



**Cecilia Yeung, MD**, is a clinical pathologist, professor, and medical director of Clinical Testing Labs at Fred Hutch and an associate professor in the Department of Laboratory Medicine and Pathology at UW Medicine. Her vision and expertise in molecular pathology has led to the pursuit of novel molecular diagnostic platforms and bioinformatics solutions aimed at faster, simpler, more accurate, and more cost-effective diagnostic tools.

**Mallory Smith, PhD**, Assistant Director of Foundation Relations

1100 Fairview Ave. N. | Mail Stop J5-200 | Seattle, WA 98109 | 206.667.5265

[msmith8@fredhutch.org](mailto:msmith8@fredhutch.org)

# ***The Judith A. Lese Breast Cancer Foundation, Inc.***



Est. 2003

*“in the pursuit of education and cure for breast cancer”*

**Cordially invites you to our  
2023 Fundraiser Dinner Banquet**

Guest Speaker

Dr. Maureen O’Donnell  
Breast Surgeon  
Johns Hopkins Sibley Memorial Hospital  
Washington, D.C.

**Wednesday, October 4, 2023**

**Maggiano’s Little Italy**  
5333 Wisconsin Avenue, NW  
Washington, DC 20015

Gabbiano and Francesca Rooms, Second Floor

6:15 pm Meet and Greet (Cash Bar)	7:00 pm Dinner	7:50 pm Program/Guest Speaker	8:30 pm Dessert
--------------------------------------	-------------------	----------------------------------	--------------------

Discounted parking rates with validated tickets for Chevy Chase Pavilion Garage

Select Contribution Tier plus \$65 Per Person (non-deductible); Each Additional Dinner Guest is \$65

**Please RSVP by Saturday, September 30, 2023**

Contribution Tiers

(fully deductible, except for \$65 dinner cost)

\$5,000	Trustee Tier + \$65 dinner cost
\$2,000	Guardian Tier + \$65 dinner cost
\$1,000	Sustainer Tier + \$65 dinner cost
\$500	Shielder Tier + \$65 dinner cost
\$200	Protector Tier + \$65 dinner cost

The Judith A. Lese Breast Cancer Foundation, Inc.  
16012 Chester Mill Terrace, Silver Spring, MD 20906  
Phone and Fax: 301-774-6719

501(c)(3) organization-non-endowed / Fed. ID No. 20-0061083

**Email:** [LeseCancerFdn@aol.com](mailto:LeseCancerFdn@aol.com) / **Website:** [www.judithalese.org](http://www.judithalese.org)



## The Judith A. Lese Breast Cancer Foundation, Inc.

16012 Chester Mill Terrace, Silver Spring, MD 20906 / Phone and Fax: 301-774-6719

501(c)(3) organization-non endowed / Fed ID No. 20-0061083

Email: [LeseCancerFdn@aol.com](mailto:LeseCancerFdn@aol.com) / Website: [www.judithalese.org](http://www.judithalese.org)

**2023 Fundraiser Dinner on October 4, 2023 at Maggiano's Little Italy, Washington, DC**

**Please RSVP by Saturday, September 30, 2023**

**Contributor's receipt for your personal records**

Check Date: \_\_\_\_\_ Check No: \_\_\_\_\_ Check Amount: \_\_\_\_\_ Memo: \_\_\_\_\_

Please detach at this line and return lower portion

**Please send check to:** The Judith A. Lese Breast Cancer Foundation, Inc.

16012 Chester Mill Terrace, Silver Spring, Maryland 20906

**Please make check payable to:** The Judith A. Lese Breast Cancer Foundation, Inc.

Contribution	Deductible (a tax receipt will be mailed to you)	Contribution Tiers		Check Off Amount
		Trustee	\$5,000	
		Guardian	\$2,000	
		Sustainer	\$1,000	
		Shielder	\$500	
		Protector	\$200	

Item	Deductibility Status	Dinner Attendees	Attendee Names (\$65/person)	Amount	Total
Dinner	Not Deductible	Self		\$65	
		Guest		\$65	
		Guest		\$65	
		Guest		\$65	
		Guest		\$65	
		Guest		\$65	
				Total Check Amount =	

The minimum contribution is \$265, which includes \$65 for the dinner (plus \$65 per guest to cover dinner expense).

Sorry, I am not able to attend the dinner. Please accept my contribution of enclosed: \$\_\_\_\_\_

Your Contact Information:

Name: \_\_\_\_\_ Phone Number: \_\_\_\_\_

Address: \_\_\_\_\_

E-Mail: \_\_\_\_\_



## Pledge/Sponsor Form

<u>Name/Address</u>	<u>Amount</u>
1.	
2.	
3.	
4.	

### Please Send Us Your E-Mail Addresses

In an effort to improve communications, The Judith A. Lese Breast Cancer Foundation, Inc. is establishing an e-mail ListServ to provide you with the latest information on Foundation events and breast cancer education. To become part of our ListServ, please send your e-mail addresses to the Foundation at: [LeseCancerFdn@aol.com](mailto:LeseCancerFdn@aol.com)

**Note:** Your e-mail addresses will not be used for solicitations, advertising, mass mailings, or any other purposes unrelated to the activities of The Judith A. Lese Breast Cancer Foundation, Inc.

- All contributions are tax-deductible.
- Checks payable to: The Judith A. Lese Breast Cancer Foundation, Inc.
- Mail check to: 16012 Chester Mill Terrace Silver Spring, MD 20906

**WALK TO WIN** the battle  
against breast cancer

Sponsored by:

## Bridgeport Benefit Advisors

John Y. Cho  
Benefits Consultant  
and Owner

4905 Del Ray Avenue  
Suite 507  
Bethesda, MD 20814

240-396-6387 (office)

866-569-0727 (fax)

[info@brport.com](mailto:info@brport.com) (email)

[www.brport.com](http://www.brport.com)

The Judith A. Lese  
Breast Cancer  
Foundation, Inc.



# 2023 WALK TO WIN

the battle against breast cancer

**Annual 1.5K / 3K Walk/Run**  
**Sunday, October 29, 2023**

**RAIN OR SHINE**

### Capital Crescent Trail

Meet/park at the Bethesda Pool,  
Little Falls Pkwy & Hillandale Rd,  
Bethesda, Maryland

**WALK TO WIN the battle against breast cancer** is a 1.5K / 3K event sponsored by The Judith A. Lese Breast Cancer Foundation.

The mission of the Foundation is to promote awareness of this disease with accurate information and work to eradicate breast cancer by sponsoring fundraising events that support us in “*the pursuit of education and cure for breast cancer.*” Over the years, monies raised have benefited: the Sullivan Breast Health Center at Sibley Memorial Hospital-Johns Hopkins Medicine; breast cancer research at the Sidney Kimmel Comprehensive Cancer Center at Johns Hopkins; the University of Pittsburgh Cancer Institute; The Fred Hutchinson Cancer Center in Seattle; The Jackson Laboratory in Bar Harbor, Maine; and the UCLA Jonsson Comprehensive Cancer Center in Los Angeles; and have provided funds for Sibley Hospital’s breast cancer prevention and treatment clinical trial program which enables uninsured and underserved women opportunities to participate in clinical trials.

Judith A. Lese, Founder/CEO

<b>Contribution Tiers</b> (Tax Deductible)	
\$2,000	Guardian Tier
\$1,000	Sustainer Tier
\$500	Shielder Tier
\$200	Protector Tier

Please make checks payable to:

**The Judith A. Lese  
Breast Cancer Foundation, Inc.**

Mailing Address: **16012 Chester Mill Terrace  
Silver Spring, MD 20906**

Email: [LeseCancerFdn@aol.com](mailto:LeseCancerFdn@aol.com)

Website: [www.judithalese.org](http://www.judithalese.org)

Phone & Fax: **301-774-6719**

501(c)(3) Organization; Fed. ID 20-0061083

## **WALK TO WIN Fundraiser Event**

WALK TO WIN the battle against breast cancer is an annual Foundation fundraiser event by our Foundation. WALK TO WIN is held each fall commemorating Breast Cancer Awareness Month.

- Our Foundation is a Grass-Roots, Washington Metropolitan Area, non-endowed organization; founded 2003.
- Monies raised support Sullivan Breast Health Center, which provides full-service breast care, detection, and diagnosis of breast cancer.
- Monies raised support specific researchers working to eradicate breast cancer.
- Monies raised support clinical trial participation for underserved/uninsured.
- Monies raised promote awareness of this disease through speakers and literature.

### **Entry Fee:**

**\$50/person (tax-deductible)** for the 1.5K / 3K event sponsored by  
Bridgeport Benefit Advisors, Bethesda, MD

### **Schedule:**

9:30 am: Registration\* begins at Bethesda Pool location adjacent to the Capital Crescent Trail

10:00 am: Welcome and Walk

10:00-11:00 am: 1.5K / 3K WALK TO WIN

\*SPONSOR-PROVIDED T-Shirt/Snack at Registration Table

Please RSVP by Saturday, October 28 to:

[LeseCancerFdn@aol.com](mailto:LeseCancerFdn@aol.com)

Judith Lese – 301-774-6719

(WALK-UPS WELCOMED ON 10/29)

## **Registration Information**

Please photocopy for additional participants

**Name**

**Address and Apt #**

**City, State, Zip**

**Daytime / Evening Phone**

**Email**

**T-Shirt Size:**

S\_\_ M\_\_ L\_\_ XL\_\_

**Registration Fee = \$50/person (tax-deductible)**

**Please make checks payable to The Judith A. Lese Breast Cancer Foundation, Inc.**

**I hereby release and hold harmless The Judith A. Lese Breast Cancer Foundation, Inc. and Capital Crescent Trail from any loss, liability, or claims I may have arising out of my participation in this event.**

**Photographs taken may be used on Foundation’s website or brochure. By signing below agreement is made with this. If you do not want your photo used, please contact Judith A. Lese.**

**Contact information is on Walk to Win flyer.**

\_\_\_\_\_  
Signature of Participant (Over 18 yrs.)

\_\_\_\_\_  
Signature of Parent/Guardian if Participant is under 18 yrs.



KENDRA SCOTT

**Kendra Scott (Bethesda Row)**

Fundraiser Event\* to Benefit

**The Judith A. Lese Breast Cancer Foundation**

**Saturday, December 16<sup>th</sup> from noon to 7 pm**

4835 Bethesda Avenue, Bethesda, MD

*Mention our Foundation so we get the donation*

*[Note – Judith A. Lese will be there to greet all]*

**You can also shop online December 15 - 17 (all day)**

[www.kendrascott.com](http://www.kendrascott.com)

*Use code **GIVEBACK-EOVHZ** in the promo box  
so that we get the donation*

\*Kendra Scott is proud to donate 20% of  
event sales to benefit  
The Judith A Lese Breast Cancer Foundation

---

*The Judith A. Lese Breast Cancer Foundation, Inc.*

Email: [LeseCancerFdn@aol.com](mailto:LeseCancerFdn@aol.com) / Website: [www.judithalese.org](http://www.judithalese.org)





## California Pizza Kitchen

Fundraiser Event\* to Benefit

### The Judith A. Lese Breast Cancer Foundation



**Monday, January 15, 2024**  
**from 11:00 am to 10:00 pm**

7101 Democracy Boulevard, Bethesda, MD  
(Westfield Montgomery Mall)

*Mention our Foundation so we get the donation*

Website: <https://www.cpk.com/locations/california-pizza-kitchen-bethesda> [promo code of "BACK20%"]

---

*Please go to the following link to RSVP:*

<https://www.groupraise.com/events/256203>

Dine in, Take out, Pick up (301-469-5090)

\*The Judith A. Lese Breast Cancer Foundation will receive 20% of sales if you mention our name when you order

---

*The Judith A. Lese Breast Cancer Foundation, Inc.*  
Email: [LeseCancerFdn@aol.com](mailto:LeseCancerFdn@aol.com) / Website: [www.judithalese.org](http://www.judithalese.org)